



## OVERVIEW

Zemecs T331A22D Category 6<sub>A</sub> UTP patch panel supports ANSI/TIA/EIA-568.2-D, EN 50173, ISO/IEC 11801, IEC 60603-7 and IEC 60512-9 standards for 10 Gigabit network systems up to 500 Mhz. The staggered port design suppresses AXT value to industry standards, thus guaranteeing signal quality at highly populated Category 6<sub>A</sub> UTP installations.

## FEATURES

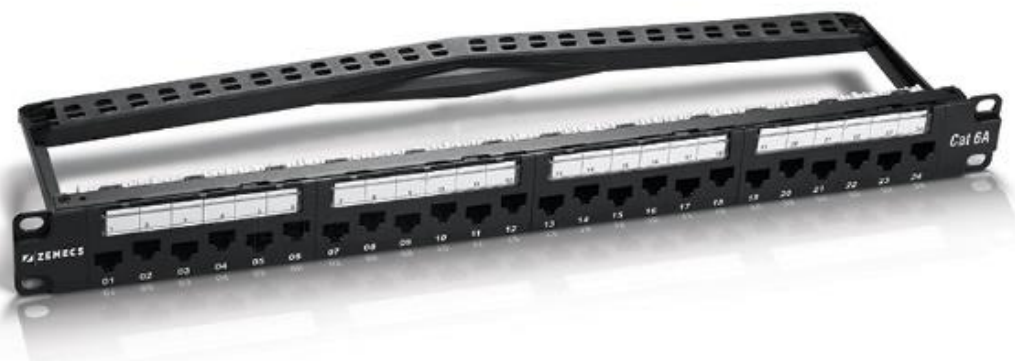
- Exceeds requirements of ANSI/TIA/EIA-568.2-D, EN 50173, ISO/IEC 11801-1:2017 and IEC 61935-2 cabling standards for channels, links and components
- Supports PoE and PoE+ applications
- Error free performance up to 500 Mhz. at 10 Gigabit Ethernet
- 50µ" gold plated contact surface
- TIA 568 A/B Wiring
- With cable organizer
- With transparent label windows

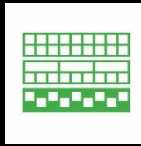
## APPLICATIONS

- 10G Base-T 10 Gigabit Ethernet
- 1000 Base-T Gigabit Ethernet
- 100 Base-TX Fast Ethernet
- 10 Base-T Ethernet
- 622 Mbps ATM
- 155 Mbps ATM
- ISDN
- 4/16 Mbps Token Ring
- 100 Mbps TP-PMD
- Broadband and baseband video

## MATERIAL AND PHYSICAL SPECIFICATIONS

Housing Material	Electrostatic Powder Coated SPCC
Front Panel Material	Flame Retardant Plastics, UL 94 V-0
Cable Organizer Material	Flame Retardant Plastics, UL 94 V-0
Plug Contact Surface	50µ" Gold Plate Over 100µ" Nickel
IDC Terminal	100µ" Tinned Phosphorous Bronze Over Nickel Undercoat
PCB	FR4, 1,6mm. Thickness
IDC Plastics	PC, UL94V-0.
IDC Contact Angle	180°
Colour	Housing: Black Organizer: Black (other colours optional)
Port Numbering	Transparent Label Windows





## COMPLIANCE

### Standards For Generic Cabling And Cabling Components - Category 6<sub>A</sub> Plug Requirements

- ISO/IEC 11801-1:2017 (V.1.0)
- ISO/IEC 11801-2:2017 (V.1.0)
- EN 50173-1:2018, EN 50173-2:2018
- IEC 60603-7-4: 2010 (V.2.0)
- IEC 60512-99-002:2019
- ANSI/TIA-568.2-D:2018

### Standards For The Restriction Of Use Of Hazardous Substances In Electrical And Electronic Equipments

- 2011/65/EU (RoHS-2)

## TRANSMISSION PERFORMANCE

FREQUENCY (Mhz.)	INSERTION LOSS (dB.,max.)	RETURN LOSS (dB., min.)	NEXT (dB., min.)	PSNEXT (dB., min.)	ACRF (dB., min.)
1	1,7	21,4	72,7	70,0	71,4
4	3,2	23,9	72,6	69,2	60,8
8	4,6	24,4	67,7	64,9	54,9
10	5,1	24,6	66,3	65,0	52,9
16	6,5	23,4	64,2	61,7	48,9
20	7,3	23,5	62,3	59,5	47,2
25	8,2	24,5	59,7	57,4	45,5
31,25	9,2	25,3	59,4	56,7	43,9
62,5	13,1	22,1	53,5	51,2	36,7
100	16,9	21,1	49,0	46,4	32,8
200	24,2	16,5	42,6	39,7	27,7
250	27,3	15,0	39,0	36,3	23,2
500	33,2	14,8	35,3	32,4	17,9

Typical performance for TIA Channel is given. Actual performance may vary depending on installation and environmental conditions.

## ENVIRONMENTAL SPECIFICATIONS

Transportation & Storage Temperature	-40 / +70	°C
Installation Temperature	-20 / +60	°C
Operation Temperature	-10 / +60	°C
Relative Humidity	10 - 93, Non-condensing	%

## MECHANICAL SPECIFICATIONS

Compatible Plug Type	8P8C	RJ-45
Insertion Life	750	Cycles (IEC-60603-7)
Durability(Termination Cycles)	200	Cycles, Max.
Plug-Jack Contact Force	100	g.,Max.(FCC Compatible RJ-45 Plug)
Punch Down Force	50	N., Min.
Contact Compatibility	22-26 AWG	Solid or stranded
Suitable Termination Tool	110	

## ELECTRICAL SPECIFICATIONS

Insulation Resistance (@500 VDC)	500	MΩ, Min.
DC Resistance (@20 °C)	0,1	Ω, Max.
Contact Resistance	20	mΩ, Max.
Termination Resistance	2,5	mΩ, Max.
Current Rating	1,5	A, Max.
Dielectric Strength (@60 Hz./1min.)	1.000	VAC Rms
Propagation Delay Skew	1,25	ns., Max.

## PART NUMBER CODING

Part Nr.	Product Description
T331A22D	Zemecs Category 6 <sub>A</sub> UTP 24 Port 1U Patch Panel, Black

