



OVERVIEW

Zemecs T399X21B series Category3 ISDN patch panels are used to terminate analogue phone lines within a structured cabling system. The products comply with ANSI/TIA-568.2-D Category 3, ISO Channel 11801 Class C and IEC 60603-7 standards. The integrated cable organizer and preprinted port numbers enable an easy and convenient way of termination.

FEATURES

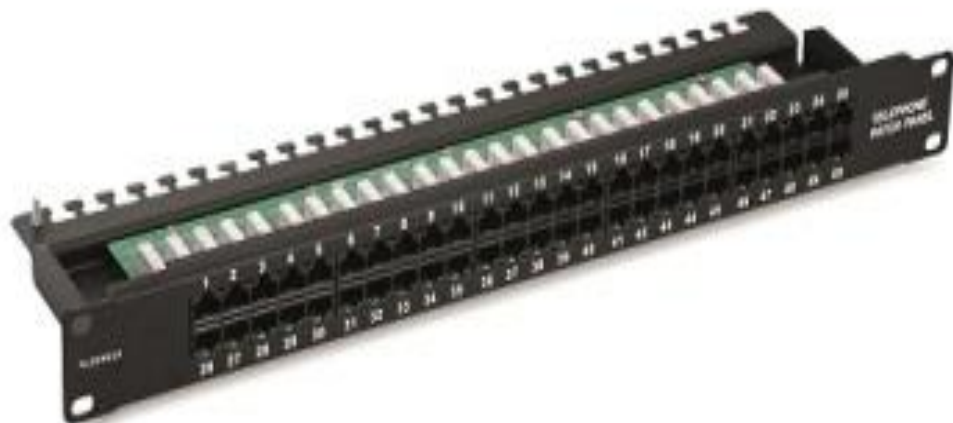
- Exceeds requirements of ANSI/TIA-568.2-D Category 3, EN 50173 and ISO/IEC 11801 Class C cabling standards for channels, links and components
- 25 or 50 ports RJ-45 jacks
- 1U height
- SPCC electrostatic powder coated chassis
- Termination with 22-26 AWG solid or stranded cables
- With cable manager and labelling fields

APPLICATIONS

- Analog phone connectivity in structured cabling systems

MATERIAL AND PHYSICAL SPECIFICATIONS

Housing Material	Electrogalvanised Cold Rolled Steel	
Housing Thickness	1,5	mm.
Housing Colour	Siyah(RAL9005)	
Instalaltion Type	19" Rack Cabinets	
PCB	FR4, UL 94V-0 / 1,45 mm.	
IDC Contacts	Phosphor Bronze, Nickel Undercoat Over 0.3µ" Gold Plated	
IDC Terminals	60µ" Nickel Undercoat Over 50µ" Zinc Phosphor Bronze	
IDC Plastics	Flame Retardant PC, UL94V-0	
IDC Contact Angle	90°	
Size (WxDxH)	482,6x154,3x44,4	mm.
Weight	710	g.





COMPLIANCE

Standards For Generic Cabling And Cabling Components - Category 3 Plug Requirements

- ISO/IEC 11801 Sinif C
- IEC 60603-7-5:2010
- EN 50173-1:2011
- ANSI/TIA/EIA 568.2-D

Standards For The Restriction Of Use Of Hazardous Substances In Electrical And Electronic Equipments

- 2011/65/EU (RoHS-2)

TRANSMISSION PERFORMANCE

FREQUENCY (Mhz.)	ATTENUATION (max.,dB)	NEXT (min.,dB)
1	0,1	58,0
2	0,1	52,0
3	0,1	48,4
4	0,2	46,0
8	0,3	39,9
10	0,3	38,0
12	0,3	36,4
14	0,3	35,1
16	0,4	33,0

ENVIRONMENTAL SPECIFICATIONS

Transportation & Storage Temperature	-40 / +70	°C
Installation Temperature	-20 / +60	°C
Operation Temperature	-25 / +60	°C
Relative Humidity	10 - 93, Non-condensing	%

MECHANICAL SPECIFICATIONS

Compatible Plug Type	8P8C	RJ-45
Insertion Life	750	Cycles (IEC-60603-7)
Durability(Termination Cycles)	200	Cycles, Max.
Konnektör Force	140	g., Max. (FCC Compatible RJ-45 Plug)
Punch Down Force	30	N., Max. (all wires)
Contact Compatibility	22-26 AWG	Solid or stranded
Suitable Termination Tool	110 Type	

ELECTRICAL SPECIFICATIONS

Insulation Resistance (@500 VDC)	10	MΩ, Min.
DC Resistance (@20 °C)	0,2	Ω, Max.
Contact Resistance	20	mΩ, Max.
Termination Resistance	0,5	mΩ, Max.
Current Rating	1,5	A, Max.
Dielectric Strength (@60 Hz. / 1min.)	1.000	VAC Rms
Propagation Delay Skew	1,25	ns., Max.

PART NUMBER CODING

Part Nr.	Product Description
T399D21B	Zemecs 25 Port 1U ISDN Patch Panel, Black
T399E21B	Zemecs 50 Port 1U ISDN Patch Panel, Black

